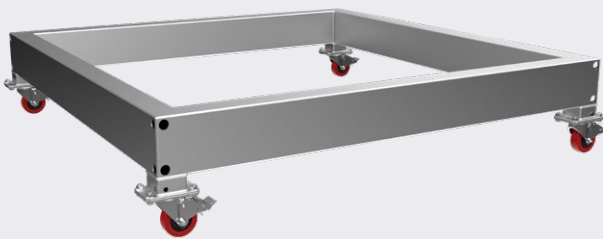
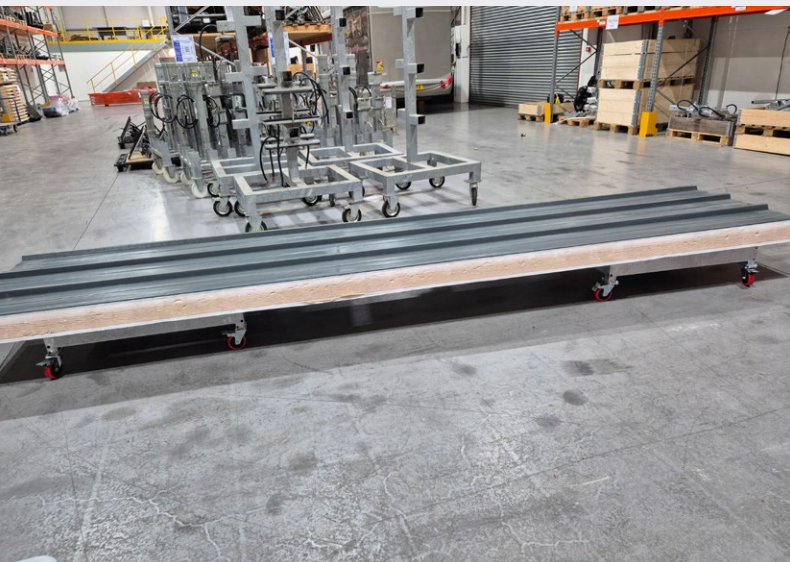


Skate Dollies



DESCRIPTION

When it comes to moving heavy cladding panels and building materials around a site, efficiency and safety are key.

Our Dollies are designed to make transportation easier, reducing the need for excessive manual handling. Whether you're working with cladding panels, facades, or other bulky items, these dollies make the job faster, safer, and more efficient

FEATURES

- Save Time & Energy – Transport materials quickly and easily, reducing manual effort.
- Provides Stability – Strong, durable design ensures your materials stay secure during movement.
- Reduces Physical Strain – Minimises the risk of injuries by eliminating excessive lifting and carrying.

SPECIFICATIONS

Material	Galvanised steel with 5mm thick box sections
Dimensions (mm)	1000 x 1000
Wheels	4 braked wheels
Safe Working Load (kg)	700
Panel Spacing	2-4m spacing on any length
Manoeuvrability	Steel swivel castors for smooth movement